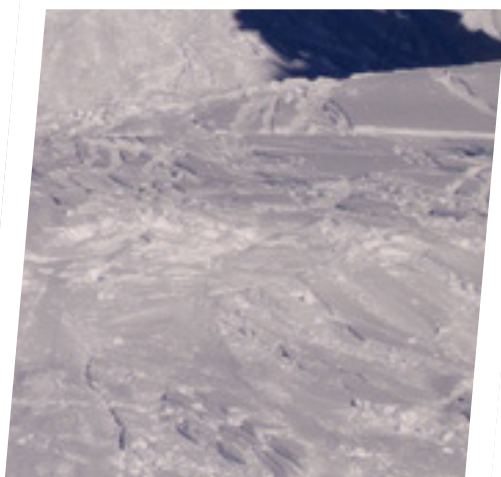
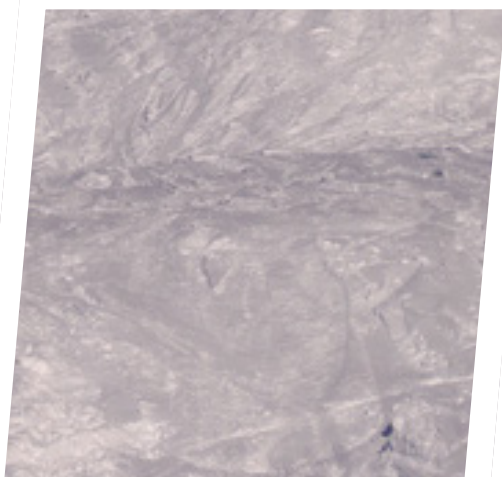
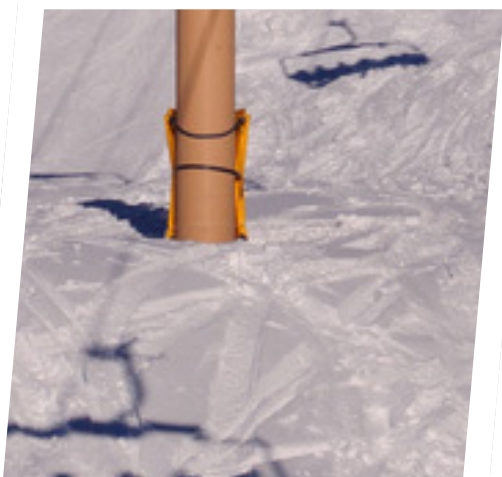
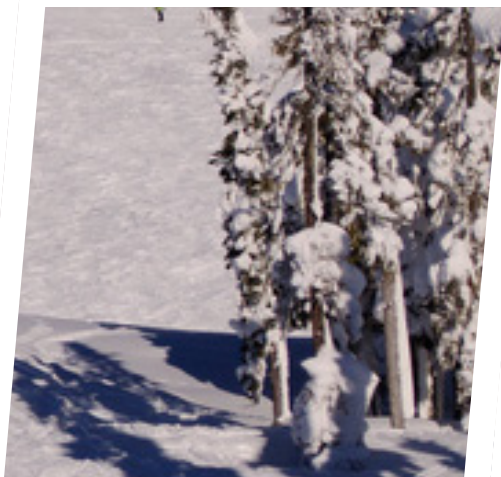


SkiB2B
Trade and information
platform for
wholesale purchases



Project purposes

SKI B2B is a printing edition + electronic mailing of the online version + constantly working Internet portal + SPORT exhibition (All-Russia Exhibition Center).



SKI B2B is a uniform concept of advance of your goods on market of wholesale purchases and state tenders.

We are always ready to take part in realization of the communication tasks facing your company, by development of the unique special projects directed on your target audience.

Distribution



Target audience:

- Owners of ski resorts
- Managing directors of ski resorts
- Heads of operational services
- Chief engineers
- Heads of committees on sports, tourism and investment policy in regions
- Heads of winter sports federations
- Heads of investment companies and venture funds
- Heads of service centers and hire points
- Directors and chief engineers of ski, biathlon stadiums, jumping complexes
- Directors of junior schools of winter sports

Our edition will be received by:



- 520 mountain-skiing complexes of Russia and CIS
- 50 ski and biathlon stadiums
- 15 jumping complexes
- Heads of sports and tourism area in 83 subjects
- 300 producers of equipment and stock suppliers in Russia and other countries

Special distribution:

- Ministry of affairs of sports, youth and tourism of the Russian Federation
- Federal State Unitary Enterprise "Sport-engineering"
- Olympic committee
- "Olympstroy"
- Organizing committee Sochi-2014
- Federation of the mountain-skiing sports and snowboard
- Test competitions (Krasnaya Polyana)

Magazines are sent addressed to the director or person who is responsible for purchases.



Advertizing in the magazine



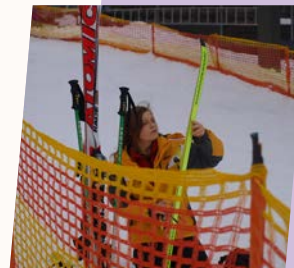
New equipment:

- elevators
- snow guns
- snow-cats
- caterpillar all-terrain vehicles
- snow-removing equipment
- snowmobiles, equipment for laying of routes
- snow-tubing
- baby elevators
- equipment for service centers
- equipment for hire points, rolling stock
- equipment for a snowboard parks
- control access systems
- ice rugs
- anti-avalanche systems
- mountain-skiing exercise machines
- artificial coverings
- attractions
- summer loading

Spare parts, used equipment:



- elevators
- baby-elevators
- snow-cats
- snow guns



Security:

- grids, racks, milestones
- mats
- information boards
- sledge saving
- equipment of first-aid posts
- surveillance cameras

Rent:

- snow guns
- snow-cats
- ice rugs
- equipment for competitions
- helicopters

- ## Services:
- design
 - automation
 - catering
 - training of instructors



Search of investments Vacancies

Our advertisers: suppliers and producers of goods and services, owners and heads of the objects, wishing to sell the old equipment.



Advertizing

Samples of advertizing module:

Snow tubing

Small text describing the product and its benefits.

mycompany.com
+7 000 000 00 00
info@mycompany.com

advertizing module 1/16
for goods of the small size

Snowmaking Products Matrix SV10

The SV10201 tower is designed to cover your most critical, early opening terrain. The SV10201 is capable of low flow high temperature performance with a smooth transition to high flow, low temperature production. The SV10201 incorporates our most advanced valving technology capable of three levels of water flow, thus allowing the SV10201 to perform optimally in the widest range of temperatures.

mycompany.com
+7 000 000 00 00
info@mycompany.com

advertizing module 1/4
for averages and large goods

999999

Snow Grooming Machine GF-350

DEER FORTE 350 is stuffed with all functions which are necessary for ski slope maintenance. It has been developed by returning to the starting point with the concept of easy usage of truly necessary functions. An exterior with a compound structure combining press hardened plate and FRP and a glass area for obtaining a wider vision, it was possible to increase the cabin rigidity. In addition, various center indicator lamps are easily removable. Switches are laid out considering their function and frequency of use. Levers are put together in a simple interior layout, all for high operability and prevention of operator fatigue.

Circular Handle
Critical steering wheel type. Operationally, it can be handled without a feeling of discomfort. Because it can using the mechanical fuel consumption is economical.

Lever Handle
There is no change of the grip with snow surface. An intuitive operation can be achieved. By using the engine type self performance is always possible with constant power.

Snow-pressing Rotor
In order to ease the pressure of the grip with snow surface, the ground part has been produced by composite type is suitable for all areas with high snow and wet snow, while the hard snow rotor is suitable for areas with low snow and dry snow in plenty.

Pressure Snow Rotor
2 types of snow shaft can be adjusted depending on the snow condition. The standard type is suitable for all areas with high snow and wet snow, while the hard snow rotor is suitable for areas with low snow and dry snow in plenty.

ВашаКомпания
+7 000 000 00 00
mycompany.com, info@mycompany.com

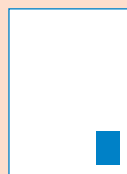
advertizing module 1/1
for very large goods



Advertisizing

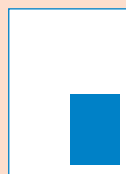
Placement of any advertizing module for a year will give you a 20% discount.

Advertisizing modules:



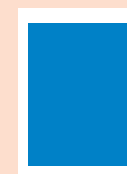
**Advertisizing module 1/16
for goods of the small size**

to 1 page	from 1-2 pages	from 3-4 pages	from 5 pages
€ 40	€ 30	€ 25	€ 20



**Advertisizing module 1/4
for averages and large goods**

to 1 page	from 1-2 pages	from 3-4 pages	from 5 pages
€ 140	€ 115	€ 90	€ 70



**Advertisizing module 1/1
for very large goods**

to 1 page	from 1-2 pages	from 3-4 pages	from 5 pages
€ 540	€ 450	€ 360	€ 270

Covers / complex offers:



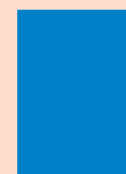
Вариант размещения	Single placement	Annual contract
1st cover + 3 pages of goods	€ 2670	€ 2140
4 th cover + 2 pages of goods	€ 1780	€ 1430
2 nd cover + 2 pages of goods	€ 1450	€ 1160
3 rd cover + 2 pages of goods	€ 1115	€ 890

Image advertizing:



**Image advertizing without
advertising module 1/1**

Single placement	Annual contract
€ 780	€ 630



**Image turn without
advertising module 2/1**

Single placement	Annual contract
€ 1115	€ 890

Inner block / complex offers:

**10 pages of goods
+ 3 layouts 1/1
(all inclusive package)**

Single placement	Annual contract
€ 2890	€ 2315

**5 pages of goods
+ 1 layout 1/1**

Single placement	Annual contract
€ 1340	€ 1070

**4 pages of goods
+ 1 layout 1/1**

Single placement	Annual contract
€ 1230	€ 980

**3 pages of goods
+ 1 layout 1/1**

Single placement	Annual contract
€ 1100	€ 810

**2 pages of goods
+ 1 layout 1/1**

Single placement	Annual contract
€ 780	€ 630

**1,5 pages of goods
+ 1 layout ½**

Single placement	Annual contract
€ 560	€ 450

Placement of news and articles of the companies in the same size is possible.



Contacts



12/1 Furmanny lane, Moscow
+7 (495) 640-87-30 (multichanneled)
www.skib2b.ru
info@skib2b.ru

SkiB2B

Our projects:



magazine
SportB2B



magazine
SportsFacilities



magazine
SkiB2B



magazine
GR Sport



catalog
The mountain-skiing
industry



catalog
Fitness industry



catalog
TOP-50 Sports
construction
and equipment



magazine
Sports
collecting

and a lot of others projects...